

# **FIRE RESPONSE**

**SFD ORIENTATION PART 3**

# OUTLINE

- What is HIPAA
- Why we Need HIPAA, and Who Must Comply
- Bloodborne Pathogen Awareness
- EMS OGS and Regulation You Should Know
- Getting to Know EMS Equipment



**SFD FIRE OG'S**

# FAMILIARIZE YOURSELF WITH THE RULES:

- All [I000 Series OGs](#) pertain to Fire Department Response. Please read through them at your convenience.
- A few to specifically review:
- [Responding to Emergencies](#)
- [Fire Scene Operations](#)
- [Incident Management](#)





# APPARATUS

SFD ORIENTATION

# YOU MUST KNOW:

- The use and purpose of each apparatus.
- Where specific tools are located in each apparatus.
- How to operate (generally) power tools.



# APPARATUS INVENTORY

## ENGINE 3



# ENGINE 3 CAB



# ENGINE 3 CAB

- 6 portable radios ( assigned to each seat)
- Four Gas Meter
- (2) Right Angle lights
- (2) Box lights
- (4) SCBA
- Automatic External Defibrillator ( AED)
- EMS house bag
- Gas Sniffer



# DRIVERS COMPARTMENT 1



# DRIVERS COMPARTMENT 1

- Caution Tape
- Box of Flares
- Reflective Safety Vests
- Safety vest's
- Utility rope

# DRIVERS COMPARTMENT 2





# DRIVERS COMPARTMENT 2

- Hose roller
- Gated wye 3">(2)1.5"
- 5" to 4" Adapter
- 5" to 2.5" Adapter
- Hydrant Wrench
- Spanner Wrench
- Cellar Nozzle
- Gate valve
- 5" to 2.5" gated Wye
- Extra brake away Nozzle
- Breakaway Nozzle Tip
- Small Misc. tool bag
- WD-40

# DRIVERS COMPARTMENT 3



# DRIVERS COMPARTMENT 3

- Drivers SCBA
- Pick Head AXE
- Flat Head Axe
- Halligan
- Bolt Cutter
- 4' New York hook w/ D handle
- Sledgehammer

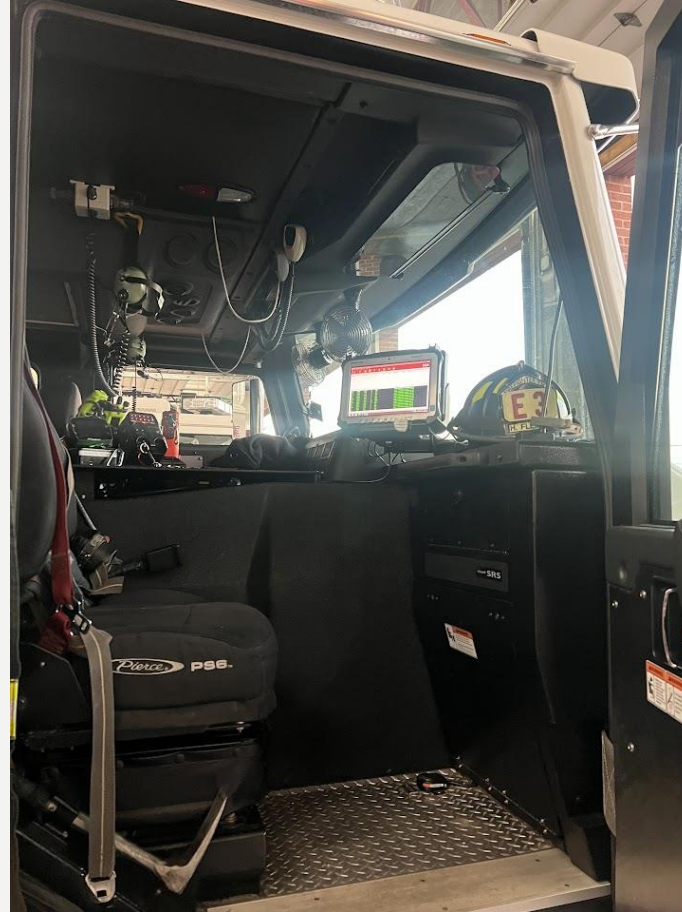
# DRIVERS COMPARTMENT 4



# DRIVERS COMPARTMENT 4

- 3 Portable Scene lights
- Tripod extendable scene light
- Milwaukee drill and impact driver
- Milwaukee Battery powered chain saw
- Pig tails
- Landing zone lights
- Box fan hanger
- Negative pressure fan
- 100' Cord reel

# OFFICER AREA



# OFFICER AREA

- Thermal Imaging Camera (TIC)
- Knox Box
- Right angle flashlight
- Mobile Data Computer (MDC)
- Accountability Board
- SCBA
- Emergency Response Guideline (ERG)
- 24" Halligan Bar
- Elevator Keys



# OFFICER COMPARTMENT 1





# OFFICERS COMPARTMENT 1

- Blitzlight Master stream device

# OFFICER COMPARTMENT 2



# OFFICERS COMPARTMENT 2

- Absorbent bucket
- Collapsible cones
- Water cooler
- RIT Bag

# OFFICER COMPARTMENT 3



# OFFICER COMPARTMENT 3

- Foam Educator
- (2) 5 gallon foam (class B)
- Chimney Bucket ( small metal shovel, Drag chains)
- ABC extinguisher
- CO2 extinguisher
- Water can

# ABOVE OFFICER SIDE COMPARTMENT





# ABOVE OFFICER SIDE COMPARTMENTS

- 4 way junction box ( 150' cord reel attached)
- (2) 100' 1 3/4" High Rise packs
- 24' extension ladder
- 14' Roof ladder
- 10' attic ladder
- 5' new York hook
- 10' claw hook

# FRONT BUMPER





# FRONT BUMPER

- 5" Front intake
- 100' 1 3/4" preconnected bumper line
- 50' Extra 1 3/4"
- Hydrant wrench
- Rubber Mallet
- Hydrant Gate valve

# TOP

- Low level strainer
- Shovel
- (2) Brush rakes
- Broom
- 3 Hard suction hoses ( Drafting)
- Wagon Pipe to ground monitor adapter

# CROSS LAYS

- (2) 200' 1 3/4" Preconnected

# REAR AND HOSES



# REAR AND HOSES

- Large Diameter Siamese
- Booster line ( roll up door preconnected)
- 300' 1 3/4" Rear preconnected
- 400' 1 3/4" smoothbore 1" rear preconnected
- 1200' 5" supply line
- 250' 3" attack/supply line
- 200' 2 1/2" pre connected smoothbore

# **WATER**

- 750 Gallons

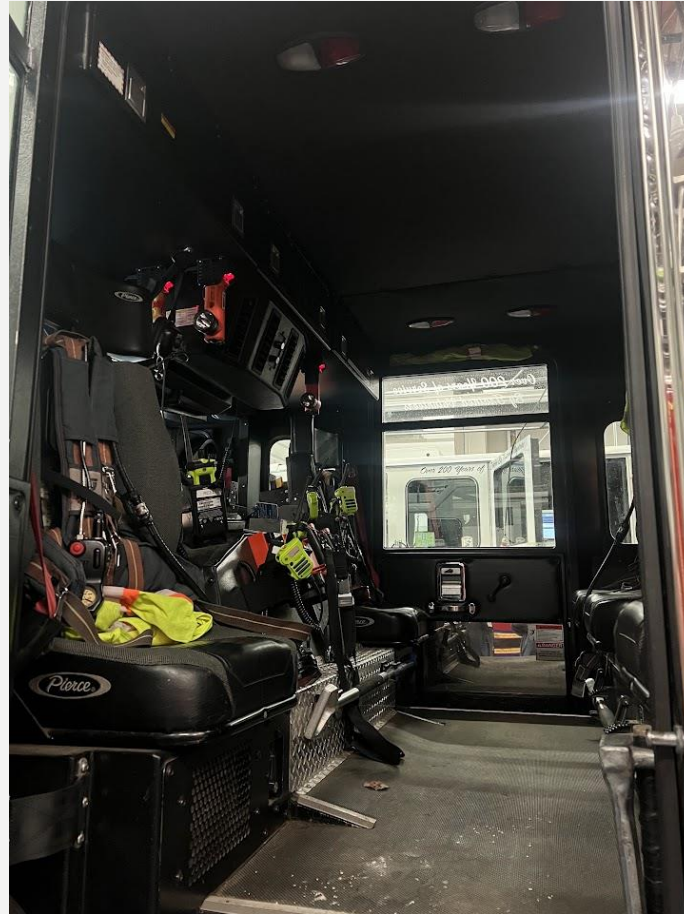
# RESCUE ENGINE 3

## APPARATUS INVENTORY





# RE3 CAB





# RE3 CAB

- 6 SCBA
- Commercial Irons pack (sledgehammer and Halligan)
- (2) 4' New york Hooks w/ D handle
- (6) portable radios
- (5) safety traffic vests
- (4) right angle lights
- (2) box lights
- Water can
- RIT bag
- (5) personal flotation devices PFD
- TNT tool
- 4 gas meter

# RE3 OVERHEAD COMPARTMENT IN THE CAB



# RE3 OVERHEAD COMPARTMENT IN THE CAB

- Gloves
- Blankets
- Smoke alarms
- Extra mask

# DRIVER COMPARTMENT 1



# DRIVER COMPARTMENT 1

- EMS house bag
- Intubation Kit
- Emergency blanket
- Suction Kit
- Lockout Kit
- AED

# DRIVER COMPARTMENT 1





# DRIVER COMPARTMENT 2



# DRIVER COMPARTMENT 2

- Chains
- Winch controls
- Extra break away nozzle
- Gated wye
- Light tower controls
- (3) Milwaukee
- Road Flares
- Hydrant wrenches
- Caution tape
- Low level strainer
- Barrel strainer

# DRIVER COMPARTMENT 2



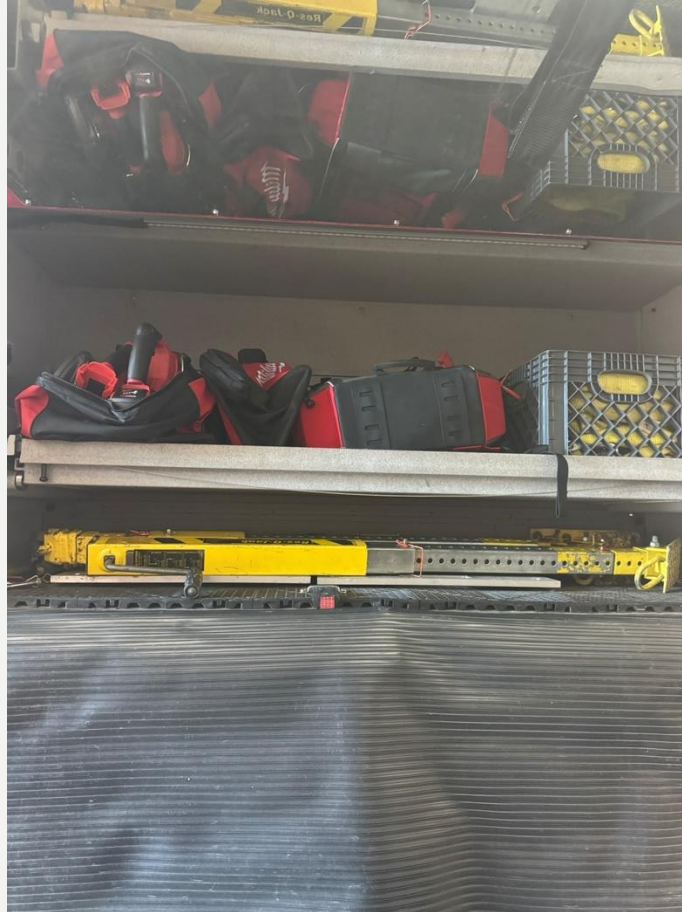
# DRIVER COMPARTMENT 3



# DRIVER COMPARTMENT 3

- Milwaukee saw bag ( Skillsaw , Bandsaw, Sawzall, Grinder)
- Milwaukee tool bag (Drill , Impact driver, Flashlight, Drill bit, screwdriver Bit attachments ½ in impact gun)
- Rope accessory bag
- Ratchet straps
- (4) Rescue jacks
- (2) Come along hoists (1 ton)
- Pickets

# DRIVER COMPARTMENT 3





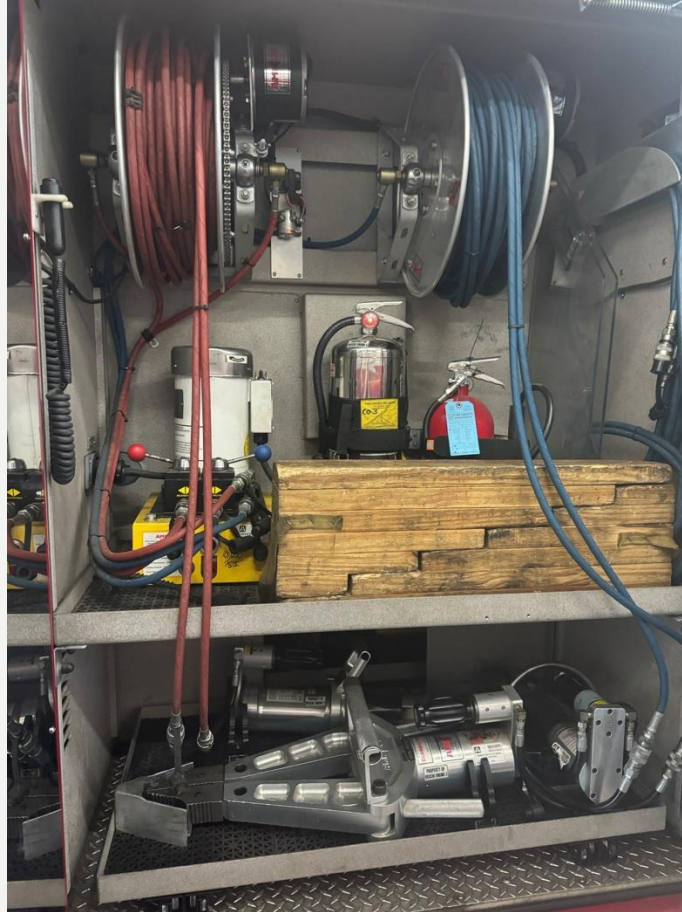
# DRIVER COMPARTMENT 4



# DRIVER COMPARTMENT 4

- CO2 Extinguisher
- Water can
- Tarp
- Hydraulic Spreaders ( preconnected)
- Hydraulic Cutters ( preconnected)
- Hydraulic Speedway Cutters ( not preconnected)
- Crash bag
- Extra Hydraulic line (50ft.)
- Stair Cribbing
- (2) Rescue Shields

# DRIVER COMPARTMENT 4



# OFFICER SEAT



# OFFICER SEAT

- Mobile Data Computer (MDC)
- Reflective safety vest
- Accountability board
- Right angle light
- Officer Radio
- Knox box keys
- Elevator keys (under seat)
- Emergency response guideline (under seat)
- Gas sniffer (under seat)

# OFFICER COMPARTMENT 1





# OFFICER COMPARTMENT 1

- (2) High rise packs 100' I  $\frac{3}{4}$ "
- Cooler

# OFFICER COMPARTMENT 1



# OFFICER COMPARTMENT 2



# OFFICER COMPARTMENT 2

- Rescue Helmets
- Battery Dremel
- Absorbent Bucket
- (2) Brushes
- (2) brush handles
- Floor jack
- 4 Airbags
- Airbag controls
- 2 Steel Airbag plates
- 2 Rubber Airbag plates
- Air tools
- Tool box
- (2) shovels
- (2) Haligans
- (2) Bolt cutters
- Flathead Axe
- Pick head Axe
- Sledgehammer

# OFFICER COMPARTMENT 2





# OFFICER COMPARTMENT 3





# OFFICER COMPARTMENT 3

- 4x4 cribbing
- 2x2 cribbing
- 2x4 cribbing
- Wedge cribbing

# OFFICER COMPARTMENT 3



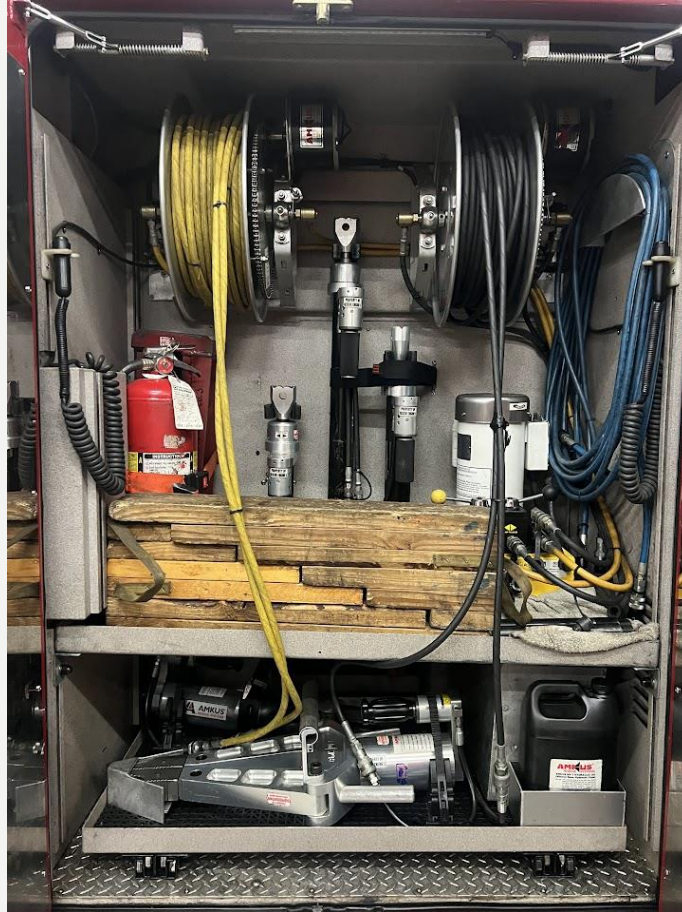
# OFFICER COMPARTMENT 4



# OFFICER COMPARTMENT 4

- Ram plates
- Hydraulic 24" Ram
- Hydraulic 36" Ram
- Hydraulic 48" Ram
- ABC Extinguisher
- Stair Cribbing
- Hydraulic Spreaders (preconnected)
- Hydraulic Cutters (preconnected)
- Chain box
- Hydraulic oil
- Extra Hydraulic line (50')
- Crash bag
- Tarp

# OFFICER COMPARTMENT 4





# RESCUE ENGINE 3 TOP

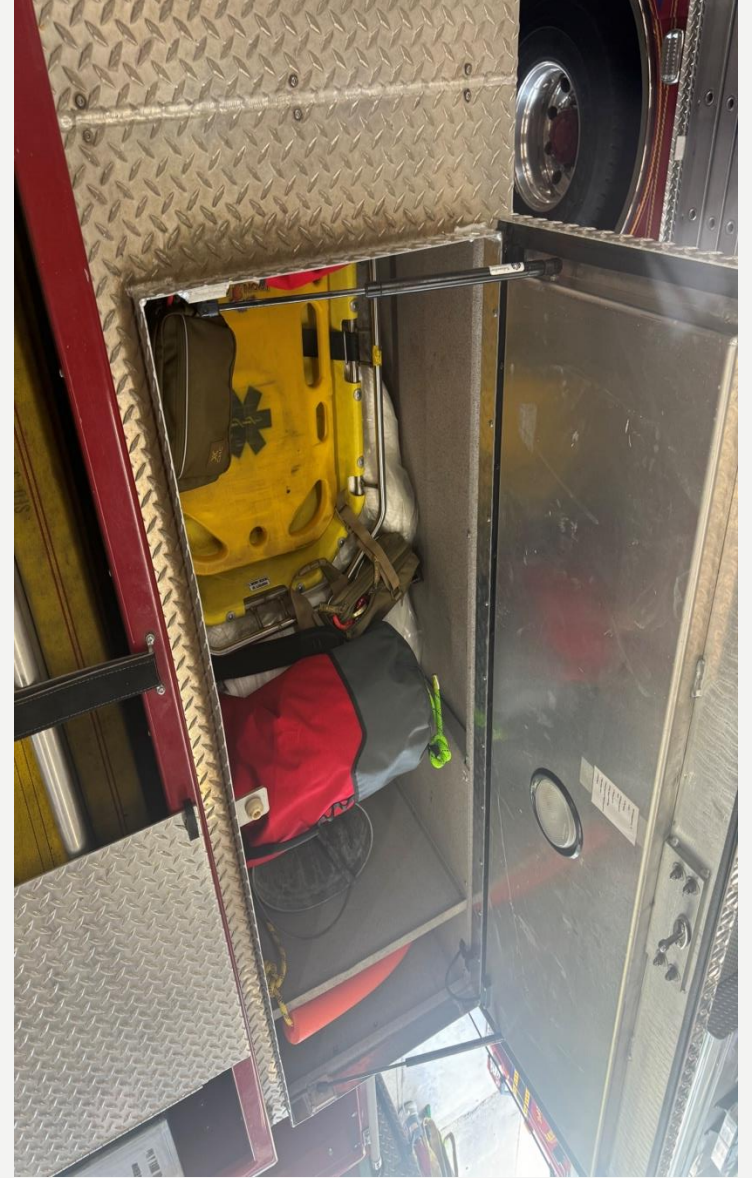


# RESCUE ENGINE 3 TOP

- Stokes basket (DS)
- (2) utility rope bags (DS)
- Rescue Harness (DS)
- Life safety rope (2) 200ft (2) 300ft (DS)
- Absorbent pads (DS)
- Oil Absorbent Booms (DS)
- Chimney Bucket (DS)
- (2) rakes (OS)
- Absorbent hopper(OS)
- Long 6x6 cribbing ( Officers and Drivers Side)



# RESCUE ENGINE 3 TOP





**YOU'RE GOING  
TO NEED THIS  
WORD:**

**CHARM**



# RESCUE ENGINE 3 LADDER RACK



# RESCUE ENGINE 3 LADDER RACK

- 10' Attic ladder
- 14' Roof ladder
- 24" Extension ladder



# RESCUE ENGINE 3 FRONT BUMPER



# RESCUE ENGINE 3 FRONT BUMPER

- 100' 1 3/4" preconnected
- 50' extra 1 3/4"
- Hydrant Wrench
- Gated Valve
- Hydrant Mallet



# RESCUE ENGINE 3 REAR HOSES



# RESCUE ENGINE 3 REAR HOSES

- 200' 2 ½" smoothbore preconnected
- 1200' 5" Supply line
- 300' 3" Supply ( gated wye preconnected)

# RESCUE ENGINE 3 REAR HOSE BED



# RESCUE ENGINE 3 REAR DIAMOND PLATE COMPARTMENT



# RESCUE ENGINE 3 REAR DIAMOND PLATE COMPARTMENT

- (2) Hard suction hoses (Drafting)
- (2) 8' Pike poles



# RE3 CROSS LAYS

- (2) 200' I  $\frac{3}{4}$ " (preconnected)
- 300' I  $\frac{3}{4}$ " (preconnected)



# RE3 WATER AND FOAM

- 830 Gallons tank water
- 30 Gallon Foam cell (classB)

# APPARATUS INVENTORY

## TRUCK 3



# **DRIVER AREA**

- Driver Radio
- Right angle light

# TRUCK 3 CAB

- 4 SCBA
- Gas Sniffer
- Four gas meter
- Thermal Imaging camera (TIC)
- Residential Iron ( Flat head axe and Haligan bar)
- HydraRam
- 4 portable radios
- 4 box lights
- Water can
- Life vest
- 4 right angle lights

# DRIVER COMPARTMENT 2

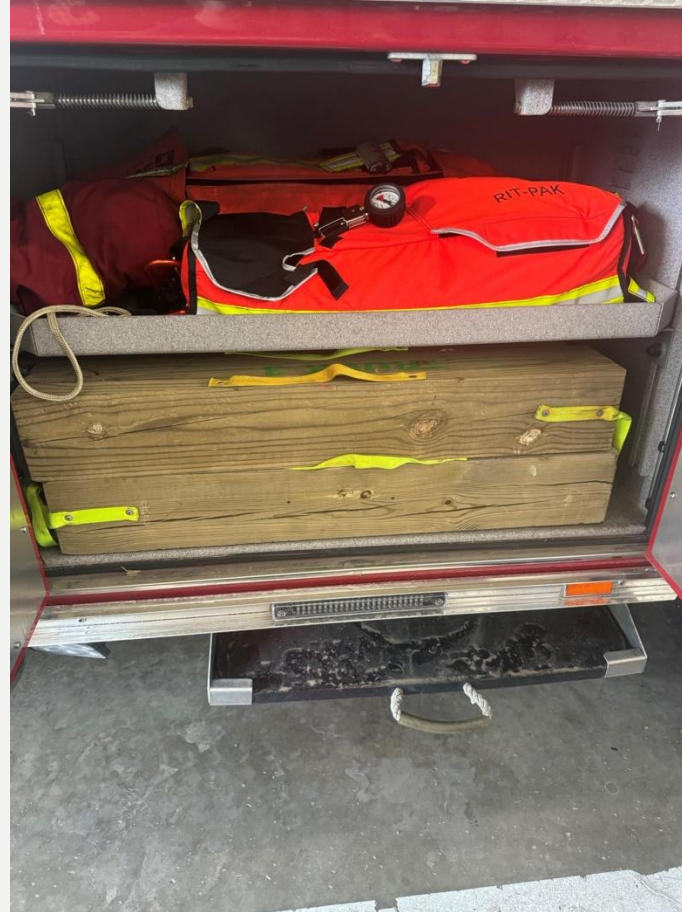


# DRIVER COMPARTMENT 2

- New style Rapid intervention team (RIT) bag
- Old style Rapid Intervention team (RIT) bag
- Outrigger Cribbing



# DRIVER SIDE COMPARTMENT 2



# TOP SIDE DRIVERS COMPARTMENT



# TOP SIDE DRIVERS COMPARTMENT

- Rope Bag
- (2) salvage buckets
- Junction box

# TOP SIDE DRIVERS COMPARTMENT



# OFFICER AREA

- Emergency Response Guideline (ERG)
- Knox Box
- Computer Aided Dispatch (CAD)
- Accountability Board
- Right Angle Light
- Officer SCBA
- Officer Radio



# TRANSVERSE COMPARTMENT

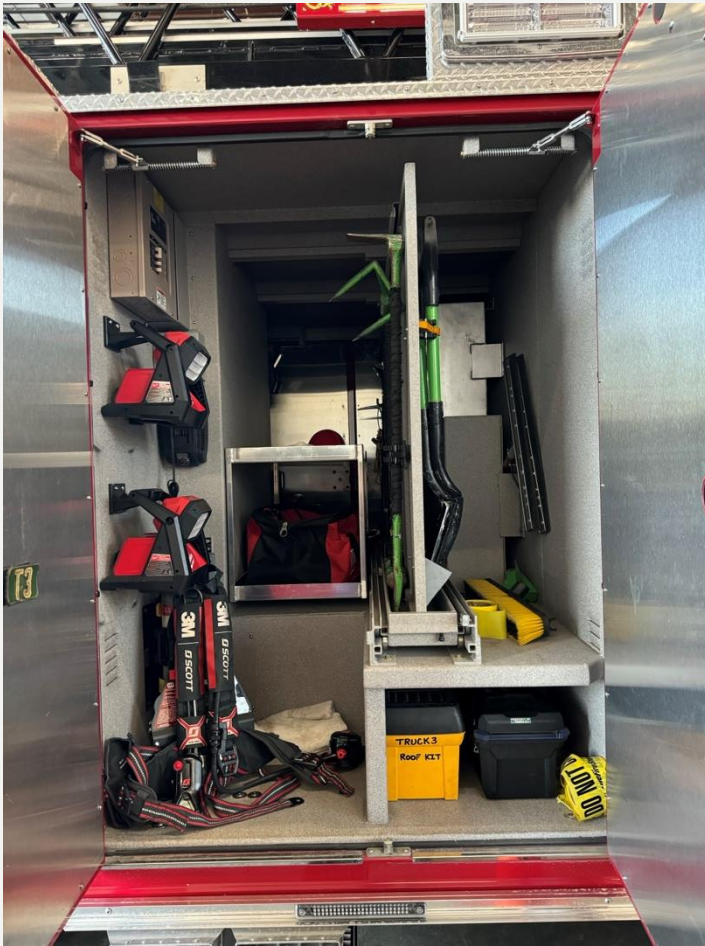




# TRANSVERSE COMPARTMENT

- 4 Battery powered scene lights
- 2 extendable battery tripod lights
- Cooler
- Little Giant
- Cord reel
- 2 Circle D lights
- Roof Kit
- Tool Box
- Caution tape
- Squeegees
- 2 Haligans (1) 36" (1) 42"
- 2 Sledgehammers
- 2 shovels
- Flathead AXE
- Pickhead AXE
- Boltcutters
- Trash Hook
- Elevator Keys
- Gator Hook
- Utility Shut off tool
- Box fan hanger
- 4' New York hook
- Dry wall hook
- Pry bar
- Milwaukee tool bag ( Skill saw, Sawzall, 1/2in Impact, grinder, drill, impact driver, flash light, drill bits, screwdriver bit kit
- Milwaukee battery charger

# TRANSVERSE COMPARTMENT



# DRIVERS COMPARTMENT 3



# DRIVER COMPARTMENT 3

- Storz 5"-4" Adaptor
- 2 1/2" Swivel Elbow
- Spanner Wrenches
- Chimney Bucket
- CO2 Extinguisher
- Water Can
- ABC Extinguisher



# DRIVERS SIDE COMPARTMENT 3



# DRIVER SIDE LADDER STACK





# DRIVER SIDE STACK LADDER

- 10" Attic Ladder
- (2) 16" Roof Ladder
- 28" Extension Ladder

# TRUCK 3 AERIAL

- 105" Aerial Ladder
- Chain saw ( Turn table)
- Ladder Belts ( Turn table)
- Chains (Tip)
- 7' New York Hook (stick)
- 14' Double ended Roof Ladder (stick)

# OFFICER COMPARTMENT 2



# OFFICER COMPARTMENT 2

- Negative Pressure Fan ( Electric, Corded)
- Cord Reel
- (2) Batter powered Positive Pressure fan

# OFFICER SIDE COMPARTMENT 2





# TOP SIDE OFFICER COMPARTMENT



# TOP SIDE OFFICER COMPARTMENT

- Tarp
- Salvage Covers
- Junction Box

# OFFICER SIDE TOP COMPARTMENT





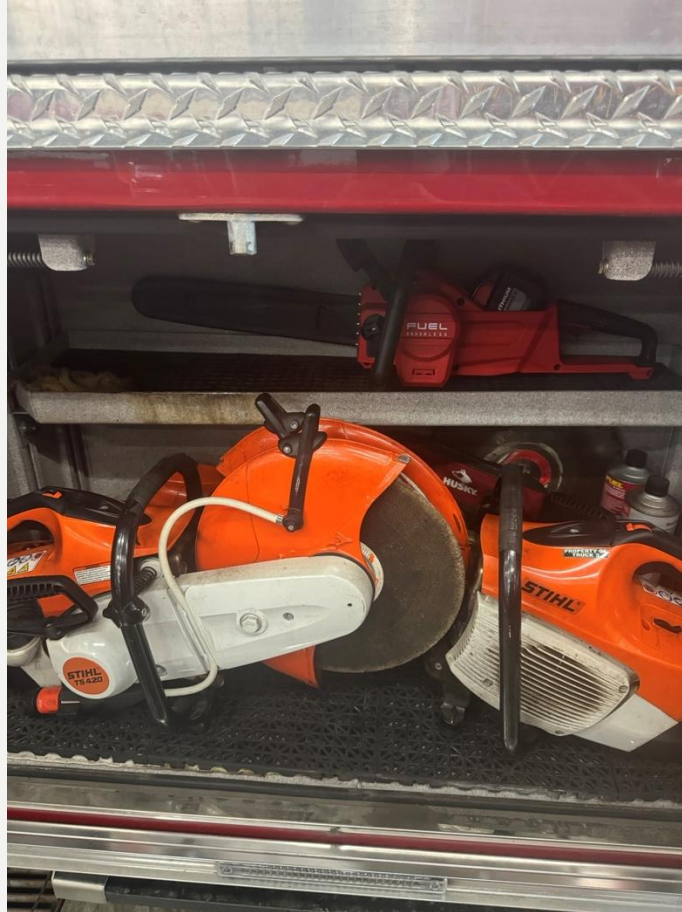
# OFFICER COMPARTMENT 3



# OFFICER COMPARTMENT 3

- Rescue Saw (I) Wood blade (I) Rescue blade
- Gas powered Chainsaw
- Battery powered chain saw
- Extra blades for Rescue Saw
- Saw bag

# OFFICER SIDE COMPARTMENT 3





# OFFICER SIDE LADDER STACK



# OFFICER SIDE LADDER STACK

- 10' Attic Ladder
- (2) 16' Roof ladder
- 28' Extension Ladder

# REAR LADDER COMPARTMENT

- (2) 16' Roof Ladders
- (2) 28' Extension Ladders
- (2) 35' Extension Ladders
- (2) 6' New York Hooks
- (1) 6' Boston Rake
- (2) 10' New York Hooks
- (2) 12' New York Hooks

# REAR LADDER COMPARTMENT





# TURN TABLE CENTER COMPARTMENT





# TURN TABLE CENTER COMPARTMENT

- Ladder belts

# TURNTABLE CENTER COMPARTMENT



# **TURN TABLE OFFICER SIDE COMPARTMENT**



# **TURN TABLE OFFICER SIDE COMPARTMENT**

- Gas powered chain saw
- Saw kit

# TURNTABLE OFFICER SIDE COMPARTMENT







**IMPORTANT**

**YOU ARE  
RESPONSIBLE  
FOR KNOWING  
ALL CONTENT  
OF ALL  
COMPARTMENTS  
ON ALL  
APPARATUS.**



# OTHER APPARATUS

## BRUSH 3

- Brush 3 has 4 compartments and an arrangement of tools.
- The layout is simple, with most tools readily accessible from exterior compartments.

## TANKER 3

- K3 has 2 compartments. Both are related to water movements.
- Please know where hose is stored, and the length of each section.



# TECHNOLOGY

SFD ORIENTATION



## RADIO STANDARDS

Personnel in control of a county monitored radio **shall limit radio usage to purposeful and deliberate communications** for the sole purpose of conducting emergency operations within the county.

All Jefferson County operational personnel shall commit to respectful, deliberate, and meaningful communications via the radio. At no time shall any user use foul language, be disparaging or harassing, or blatantly misuse the radio system for personal or ill-conceived reasons.

# RADIO GUIDELINES

- Our Emergency Communications Center shall be identified on the radio as "Jefferson", and not "Headquarters", "Dispatch", or any other variation.
- When contacting another unit or facility for acknowledgement and further transmission, Identify the unit you are calling first then the unit you are; as example: "Jefferson from Truck 3" (if you are on T3 and calling Jefferson), or "Chief 3, from Truck 3" (if you are on T3 and calling CH3). This is called the "hey you, it's me" method.
- Do not use "10 Codes." Plain language transitions are required.
- The flow of information at an emergency scene is essential to a successful operation. The following benchmark communications should be reported to the dispatch center by each responding unit via radio:
  - When a unit goes responding.
  - When it arrives on the scene – and the conditions present.
  - When it leaves the scene.
  - Whenever a change of status occurs.
- Note: When applicable the unit officer may choose to use the MDC for the communications of a status change.



# MOBILE RADIOS

- This style Mobile Radio is found in all SFD Apparatus.
- The following are the components
  1. Power and Volume Control
  2. Channel Toggle
  3. Zone Up or Down
  4. Push to Talk on Handheld.
  5. Emergency Activation Button



# PORTABLE RADIOS



- This style Portable Radio is used by all personnel at SFD.
- The following are the components
  - A. Emergency Activation Button
  - B. Power On and Volume Control
  - C. Push to Talk (PTT)
  - D. Scan On or Off
  - E. Channel Toggle
- Some Radios may have a lapel mic attached. Both PTT buttons would work to broadcast.

# MOBILE DATA COMPUTERS



Spillman Mobile - [CAD : All Calls and Other Agency's Units (BFD,KFD,PFD,...) (Last Updated at 11:57:24)]

File Edit Search Screens CAD Tools Help

Back All Right All Home Ctrl+F5 F5 F10 Shift+F5

All	Call#	Nature	Location	City	Zone	P	Status	Time	Units
	5i	PD Accident	501 S CHERRY ST	SFD	LSW	3	RCVD	55.4m	
	2i	Burglary	101 SANDUSKY WAY	SFD	LN	4	RCVD	1.1H	
	1f	Structure Fire	750 N 12TH ST; MEADOWLA	PIE	FSOU	1	RCVD	1.1H	
	5f	PD Accident	501 S CHERRY ST	SFD	FSW	3	RCVD		
	3i	Traffic Offens	123 MAIN GATE AVE	PIE	FA				
	4i	Theft	401 ELDER ST	SFD					

OA	Unit	Status	Time	Call#	Zone
	E1	ONDT	7.0d		
	307	OOSRV	1.0H		
	105	ENRT	34.1m	4i	
	102	ARRVD	1.0H	3i	
	106	ENRT	55.8m	4i	
	107	OOSRV	58.9m		

Status: ONDT 00:01:05 | No Active

- Use of the Mobile Data Units (MDU or MDC) for routine apparatus tracking is strongly encouraged. At a minimum, for the purpose of ambulances arriving at a hospital, and apparatus going available from a scene, all units, when adequately equipped and properly functioning, should attempt to utilize the MDC to make these status changes in CAD.
- CAD will provide call details, turn by turn directions, and apparatus status information.
- Units can add call comments, and chat with other units via instant messaging.

**spillman**  
technologies, inc.

reliable innovation

# ESO FIRE

- ESO FIRE Module is where 100% of our calls (EMS and Fire) are documented.
- As a responder, you may be responsible for completing Fire Module Records.
- Contact an officer with questions.
- A VIDEO is available at the bottom of the Members Only section.



- Open ESO with your user specific credentials and SVFD3EMS as Agency ID.
- Open the Fire Module by clicking on the icon:



- **Note:** Records will NO LONGER auto-populate as they previously did.
- **You must click on one of the import options** at the bottom of the screen to generate your record:

Import CAD

Import EHR

Import CAD	Import EHR
Should be used on any “fire” call type, or on any call with multiple unit (A3, RE3, D3, etc.) response when a EHR is not completed.	Should be used on “EMS Only” call types when an EHR record has been completed. <u>All ePCR data will be imported when the EHR is completed PRIOR to Fire Module being opened.</u>

**Note:** We have noticed that sometimes records will take some time to populate the list. Be patient.

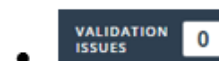
- Find your record in the pop-up list, and click Open:

Open

- A confirmation window with call details may open, then select “Import:

Import

- Complete all fields with a **REQUIRED** tag, and/or all appropriate fields – make sure ALL responding personnel are listed in the record.



- When Validation Issues is “0”, click on it, and Lock the Record:

Lock Incident

- Your record is complete when it shows as:

LOCKED

A decorative wavy line in yellow and white on the left side of the slide.

# **ACCOUNTABILITY SYSTEM**

**SFD ORIENTATION**

# ACCOUNTABILITY

[Review the SFD OG Here.](#)

## DESIGNED BY SHEPHERDSTOWN

- EMS Chief DeMeritt and Firefighter Andrew Arnold with the insight and help from other Shepherdstown members developed the Shepherdstown Accountability System.
- This system is the first of its kinds that incorporates riding assignments with personnel accountability.

## DESIGNED FOR SHEPHERDSTOWN

- Shepherdstown needed a system of emergency incident personnel accountability to account for all firefighters, EMS personnel, and/or other emergency support personnel at any time throughout the emergency occurrence.
- The **Shepherdstown Accountability System** **MUST** be used by **ALL** Operational members responding on calls when IC is established.



Any time Incident Command is Established, the Accountability System SHALL be Used.



## SHEPHERDSTOWN ACCOUNTABILITY SYSTEM

Each operational member of the department will be issued an "Accountability Card."

Each apparatus will have an "Accountability Board" on which a helmet front specific to that unit will be affixed for each riding position. The Accountability Board will reside on the front dash of the unit.

Once seated and buckled, the Officer (*or personnel in front right seat*) will find and affix the Accountability Cards for all personnel on the unit.

In accordance with SFD policy, personnel that have issued fire gear should have fire gear with them, they should have removed their Accountability Card from their helmet prior to boarding the unit, and that Accountability Card should be used.

Affix the Accountability Card in the associated riding position on the Accountability Board.

Those personnel with issued helmets shall affix the helmet front to their assigned helmet, and shall wear the helmet for the duration of the incident, as applicable.

Upon arrival of the incident the officer will turn the Accountability Board into command, an accountability officer or otherwise designated accountability personnel.





## SHEPHERDSTOWN ACCOUNTABILITY SYSTEM

If personnel arrive via personal vehicle, go to the Incident Commander, and s/he will hand you a Helmet Front of your newly designated riding assignment, and will affix your Accountability Card to that spot on the Accountability Board.

No member shall enter operational deployment without first reporting to the IC or designated accountability officer, and being assigned a helmet front/unit assignment.

When the unit is released, it is the responsibility of the officer to obtain the Accountability Board for that unit.

The Accountability Boards should remain intact until the unit has completely returned to the station, and personnel are getting off the unit, and/or no new emergency response is indicated.

Upon release from the unit, the officer and crew must make certain the helmet fronts are returned to the Accountability Board, the Accountability Cards are replaced on their helmets, and the Accountability Board is replaced in the front dash of the unit ready for the next call.

**PART 3 IS  
COMPLETE**

[PLEASE RETURN TO THE ORIENTATION  
HOMEPAGE TO COMPLETE PART 3.](#)